

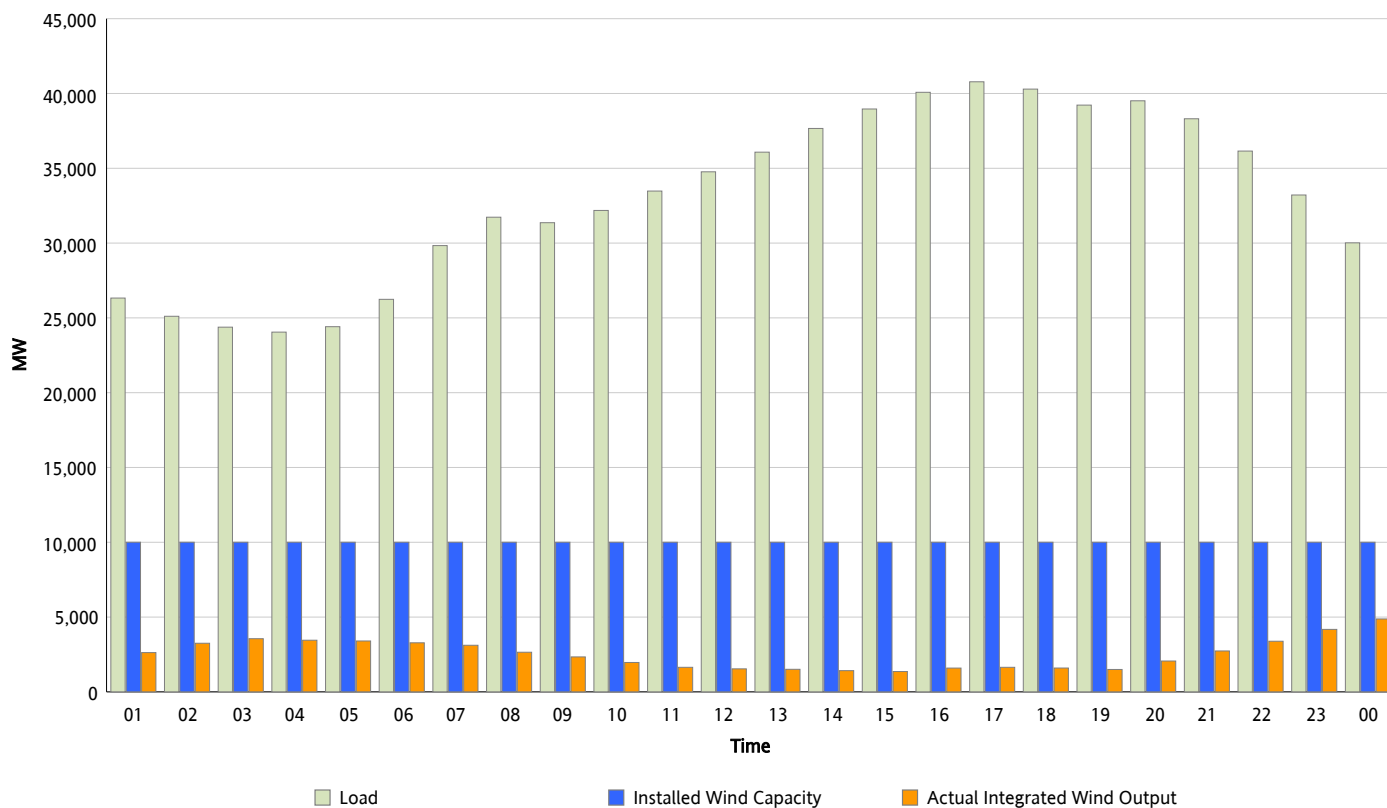


ERCOT Grid Operations

Wind Integration Report : 11/01/2012

Peak Load	40,782 MW
Load Peak Hour (HE)	17
Wind Over Peak	1,642 MW
Wind Record 06/19/12	8,368 MW
Max Wind Value*	5,393 MW
Wind Peak Time	00:00
Wind Integration %	18.76 %

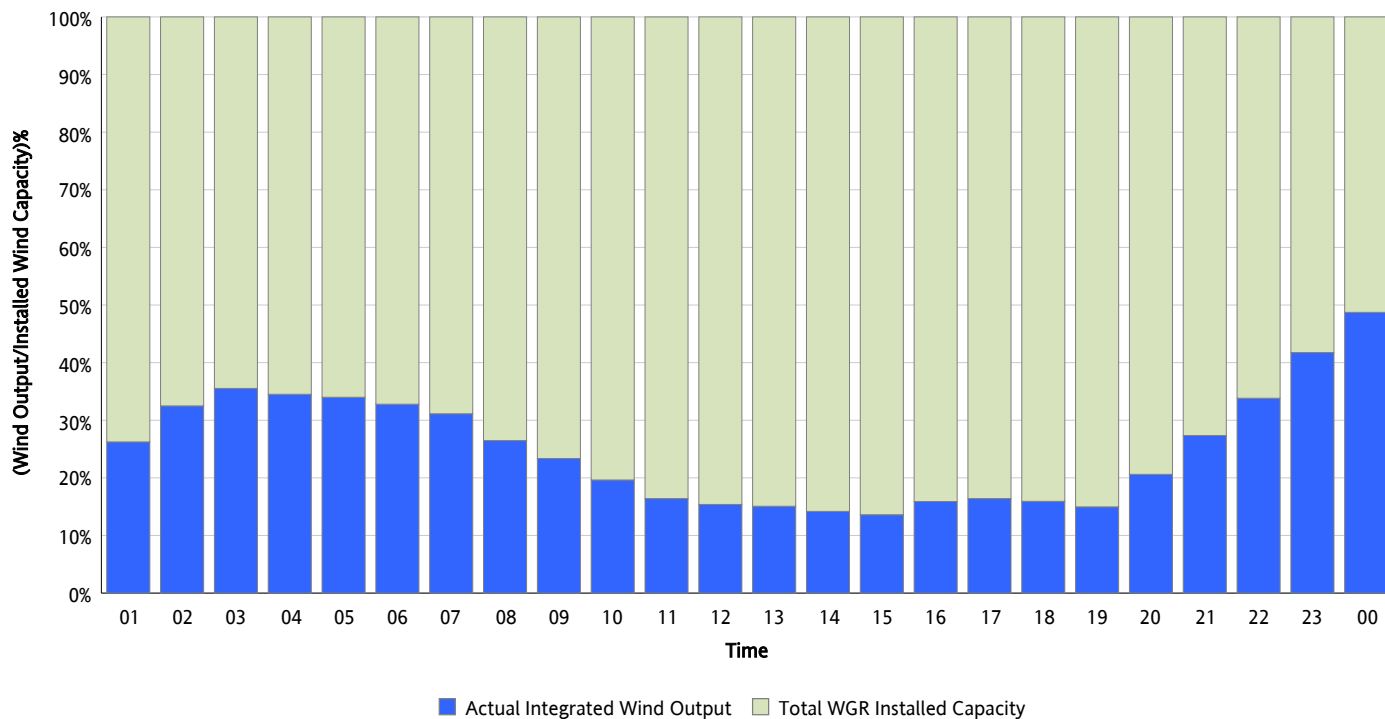
Hourly Average Actual Load vs. Actual Wind Output
11/01/2012



** Wind Record and Wind Max represent instantaneous values and the rest of the values are integrated over the hour*

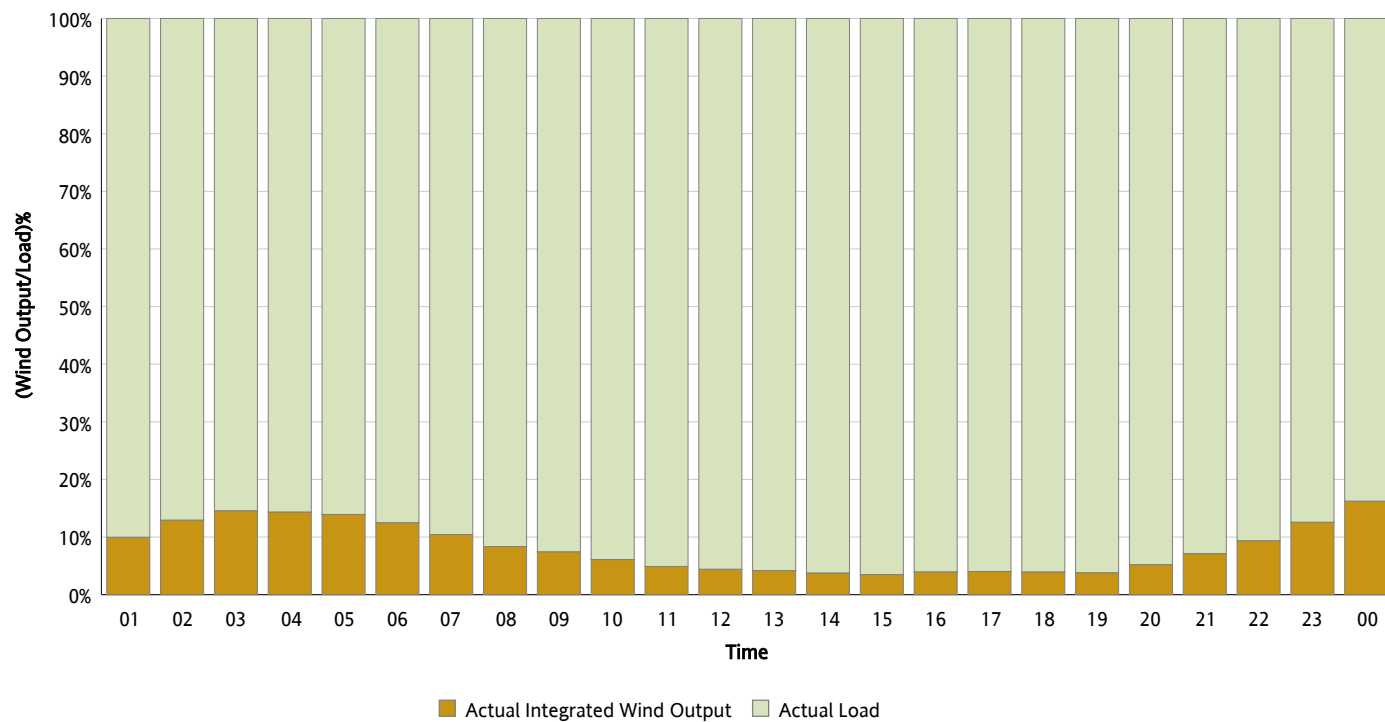
Actual Wind Output as a Percentage of the Total Installed Wind Capacity

11/01/2012



Actual Wind Output as a Percentage of the ERCOT Load

11/01/2012



ERCOT Load vs. Actual Wind Output

10/25/2012 - 11/01/2012

